

Zero Waste by 2025 Feasibility Study for Marin

The Marin County Hazardous and Solid Waste Management Joint Powers Authority (JPA) adopted a goal of Zero Waste by 2025 and is now conducting a Zero Waste Feasibility Study to determine what changes need to take place to make it happen.

The Feasibility Study is examining and considering possible changes to commercial and residential collection services, new facilities, rate structures, problematic wastes, legislation, and expanded public education to facilitate behavioral change. Your participation and comments will be one of many ways that

you can contribute to developing a greener Marin through achieving the goal of Zero Waste. As part of the study all Cities, Haulers, and Facility operators are being interviewed to determine optimal ways to introduce new waste reduction programs. The study is soliciting input from advisory groups and the public to make sure that all opinions are on the table. The draft report will be available for public comment at a meeting to be held September 17, 2009 at 6:30pm in the Marin County Board of Supervisors Chambers. Please visit www.MarinRecycles.org for updated information.

Making Recycling Easier

Do you find yourself struggling to get that last drop of strawberry jam from the bottom of the jar onto your peanut butter sandwich? Fortunately that jam jar can go straight into the recycling cart with or without the jelly residue at the bottom of the jar. Water is a valuable resource, and so is your time, so when the jar is empty toss it right into your recycling and start enjoying that sandwich.

Here are the important things to remember when it comes to recycling. Containers need to be empty but not clean. When your recycling reaches the Material Recovery Facility (MRF) where it is sorted, the first step in the process is done by human hands. If a half full can of tomato sauce reaches this point it will have not only spilled all over the other materials in the truck, but also the people who are sorting your recycling and the equipment that runs 20 hours a day 6 days a week. Please help keep the recycling process clean by making sure your recyclables are empty of food or liquid before they go into the blue cart.

We are all doing our part to help keep the planet clean. Keep up the good work Novato!



Contact Us:

Novato Disposal Service
PO Box 3849
Santa Rosa CA 95402
(415) 897-4177

Office Hours

Monday - Friday 7am-6pm
Saturday - Sunday 7am-3pm

Office Address

3400 Standish Ave., Santa Rosa

Fall Community Cleanup September 21-25, 2009

During this week, Novato residential garbage customers may place cleanup materials from their homes at the curb for collection. You must follow all listed requirements to ensure collection. Items must be at the curb the night before your regularly scheduled collection day.



- Oversized, heavy, or prohibited items will **not** be removed (such as rock, tires, sofas, mattresses)
- Hazardous waste will **not** be collected. Hazardous waste disposal information is available on page 2 or on our website at www.novatodisposal.com. You may also call 892-7344 for additional information.

Special Handling:

Appliances & Bulky Metal Items

- Call Novato Disposal at 897-4177 by September 17 or collection of appliances, such as washers, stoves, microwaves, water heaters and refrigerators. A \$30 fee is charged for collection of any refrigeration unit. All other appliances will be billed at \$15 each. The fee will be added to your garbage bill. Refrigerator doors must be taped, tied or otherwise securely closed for child safety reason.

Recyclable Items

- Keep all recyclable items separate from cleanup debris. Recycle in your blue cart or at a recycling center.

Free Household E-Waste Drop-off

October 9-12, 2009

10am - 3pm

Novato Recycling Center

7576 Redwood Blvd.

See Page 3 for more details

Who May Participate:

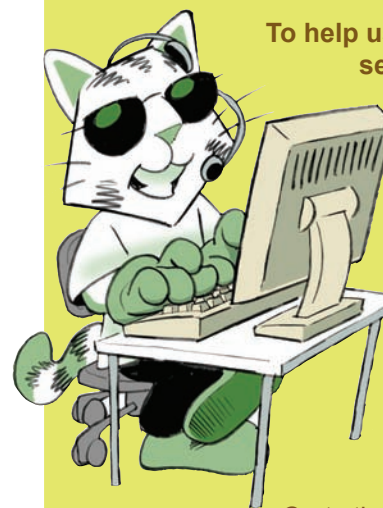
- Novato Disposal Residential Customers
- Multi-Family Complexes:
Complexes with central collection bins must request Cleanup Week collection service. Call Novato Disposal at 897-4177 no later than Sept. 17.
- Businesses and Institutions may not participate.

Requirements:

- All requirements must be adhered to during cleanups:
 - A maximum of 14 bags, boxes or cans may be placed at the curb.
 - Loose items will not be collected. All material must be contained.

FROM CUSTOMER SERVICE

GUIDELINES & REMINDERS



To help us provide the best service to you, please observe the following:

- Place carts at the road edge the night prior to your service day.
- Please leave 3 feet between garbage, recycling & yard waste carts.
- Place garbage loosely in your cart.

Carts that are overstuffed or have material jammed into them may not empty completely.

Please remove your containers from the road edge as soon after they have been serviced as is practical.

Be sure all items are contained inside your carts. Carts that have items sticking out of them or have material piled on top may not be emptied or may receive additional charges.

You may opt to set out recycle and yardwaste carts only when full if you choose.

For everyone's safety and convenience, we request that you pay special attention to the following:

Do not place carts within three feet of vehicles, mailboxes, fire hydrants, other obstacles or personal property.

Collection vehicles need 14' overhead clearance. Carts should not be placed in an area with overhangs, trees or other obstacles.

Please park your car in your driveway the night before your collection day wherever possible. There may be a delay in collection of blocked carts.

EXTRA TRASH

If you have an overloaded garbage cart or extra bags of garbage piled on top of, or alongside your cart, you may receive an automatic charge for each extra bag or can of garbage. Carts are considered overloaded if the lid will not close.

If you have extra garbage, call our office at 897-4177 by 3 pm the day before your regular collection day to order extra service and avoid confusion when you receive your bill. Do not overstuff your carts as they may not empty completely.

HOLIDAY COLLECTION SCHEDULE

Service is delayed by one day for customers whose service day falls on or after the following holidays when they occur on a weekday:

- Christmas
- New Years Day

DON'T MAKE MUCH TRASH?

Garbage rates are based on the size of your garbage cart. If you are generating less waste, you can reward yourself with a smaller garbage bill by exchanging your current cart for a smaller size.

We offer four levels of service. Super recyclers or small families may be able to reduce their waste and subscribe to the 20 gallon service.

If you would like to change your service level, please contact our office for details and rates.



What Would You Like To Read? We want to hear from you!

Is there a recycling topic you would like to know more about? An article you would like to read? Know of a company that has gone green that you would like to recognize? General newsletter suggestions or comments? Send us an email!
greenteam@unicycler.com

Holiday Tree Collection

Curbside Tree Recycling

During the week of Jan 15, 2010 customers may place whole trees at the curb the night before their regular collection day. Stands, lights, tinsel & ornaments must be removed. Flocked trees cannot be composted and will not be picked up.

San Marin High School Safe Grad Fundraiser

Take your whole tree to the San Marin High School parking lot 8am- 5pm only on December 26, December 27, January 2, January 3, January 9, & January 10. The high school asks for a \$5 donation (\$10 for flocked trees) which helps fund Safe Grad Nite. Do not leave trees at the school at any other time! You may schedule a pick-up at your door for a \$10 fee (\$20 for flocked trees). Call 899-9223 for an appointment.

If you have a flocked tree, please use San Marin High School. Novato Disposal is unable to collect flocked trees.

Holiday Collection Schedule Change

Because Christmas and New Years are on Friday this year, service will be delayed for Friday customers until Saturday during the holiday weeks.



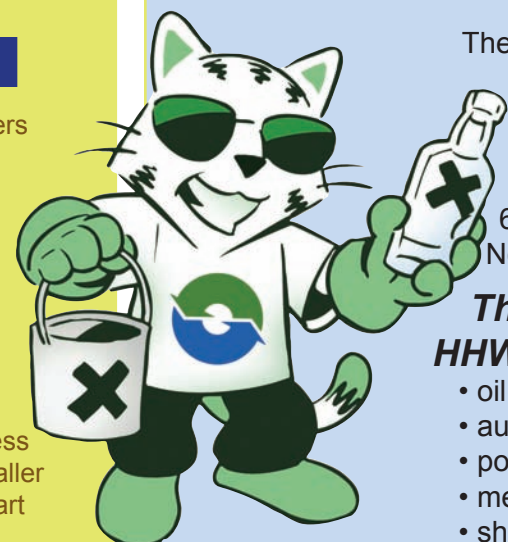
Paying Your Bill Online?

We offer Automatic Payments as a convenient way for Novato customers to manage their garbage bill! With this service you will not receive a bill in the mail. Your total amount due will be automatically charged to your debit or credit card at the beginning of each billing cycle.

Some customers choose to use a 3rd party such as their personal bank to pay their bills online. This can be a convenient way to pay your bills, but must be managed properly:

- Residential garbage bills are due every three months. Some people have set up their quarterly bill for monthly payment, creating large and unnecessary credits to their account.
- Accuracy is key. Be sure to verify that your account number, including the three letter code, is correct with your online bill-paying service.
- Your account number will change if you move or re-open a closed account. Be sure to update your bill-paying service immediately so your payments are credited properly.

Household Hazardous Waste Disposal



The Household Hazardous Waste Facility is open the first and third Sunday and Monday of each month from 8:30 am-1:30 pm, excluding most holidays. Call the Hazardous Waste Hotline at 892-7344 for more information. Businesses must make an appointment by calling 892-6395. The facility is open to Novato residents only and is located at the Novato Recycling Center at 7576 Redwood Boulevard.

The facility accepts the following and other types of HHW:

- oil based paints, stains & thinners
- automotive and furniture polishes
- pool chemicals
- mercury thermometers & switches
- sharps & lancets (in approved containers)
- engine cleaners & brake fluid
- pesticides, insecticides
- computer monitors & televisions
- propane tanks

Ongoing Dropoff

The following materials **only** are accepted Tuesday through Sunday from 10 am to 4 pm at the Novato Recycling Center located at 7576 Redwood Boulevard. No appointment is needed.

- latex paint only in original can
- antifreeze (5 gallon max)
- household batteries
- used motor oil & filters
- automotive batteries
- fluorescent tubes & bulbs

Questions?

Residential or Household Hazardous Waste:
Call the household hazardous waste hotline at 892-7344

Business or Commercial Hazardous Waste:
Call the business hazardous waste hotline at 892-6395. *Dates changed due to holiday weekends

Hot Toxic Topics – You've got questions – we've got answers!

Question: What do I do with old prescription medications? I know you shouldn't flush them down the toilet or put them in the garbage, so what can I do?

Answer: Good question! You definitely don't want to flush them down the drain or toss them in the garbage; both can cause harm to fish and wildlife. In Novato, several pharmacies accept old medications. Pharmaca Integrative Pharmacy, Costco Pharmacy and pharmacies at Longs/CVS Drugs accept unwanted or expired medications. Cross off your personal information before dropping them off.

Question: I've heard that I shouldn't put household batteries in the trash? I thought new batteries no longer had mercury in them? Can't I just throw them out?

Answer: You are correct that new alkaline batteries are produced with no or very small amounts of mercury. However, there are still heavy metals in alkaline batteries that are of concern to the environment. In addition, Ni-Cad and Lithium-Ion batteries have more hazardous materials that require special handling and disposal. In California, household batteries CANNOT be disposed of in the trash. You can bring all types of household batteries to several locations in Novato, including the Novato Recycling Center and Pini's Hardware for proper disposal and recycling. Tape the ends of your Ni-Cad and Lithium-Ion rechargeable batteries prior to disposal to prevent accidental sparking.

Question: Can I bring my empty paint cans to the HHW Facility?

Answer: If your paint cans are entirely empty and dry, you can "pop off the top" and throw the empty can and the top in your recycle bin. If you have paint in the can, bring all latex paint to the Novato Recycling Center and both latex and oil base paints to the Household Hazardous Waste Facility.

Question: What do I do with my old cell phones?

Answer: The CA Cell Phone Act of 2004 requires all cell phone retailers to take back all old cell phones (not just their own) for recycling for free. In Novato, there are several cell phone stores, including Cellular World, Radio Shack and Sprint PCS that will accept your old cell phone for recycling.

Question: I know that compact fluorescent bulbs are good for saving energy, but I've heard that they contain mercury? Are they safe to use? When they burn out what should I do with them? And can I bring my old incandescent bulbs in for recycling?

Answer: Compact fluorescent bulbs, known as CFL's, do contain mercury vapor and cannot be disposed of in the trash. They are safe to use, but if broken the mercury can disperse into the environment, creating a hazardous situation. Bring your used CFL's, your fluorescent tubes and halogen lights, to the Novato Recycling Center or Pini's Hardware for proper recycling. As for those old incandescent bulbs, they do not contain mercury, so dispose of them in the trash.

Bulky Item Pickups

Novato Disposal offers a year-round Bulky Item Pickup for items that are too large for the trash.

Items such as mattresses, couches, washers and dryers can be picked up from your home on a for-fee basis.

Items that cannot be recycled, such as broken furniture will be disposed of at the landfill. Scrap metal, such as exercise equipment, washers and refrigerators, will be processed and recycled. Call our office at 897-4177 for pricing.

Please remember:

- We are unable to pick up hazardous waste. Please see below for hazardous waste disposal options or visit our website at www.novatodisposal.com
- Please direct reusable items to thrift or second hand stores.

2009 HHW Facility Schedule

Open 8:30AM – 1:30PM

Sunday	Monday
September 13*	September 14*
September 27*	September 28*
October 4	October 5
October 18	October 19
November 1	November 2
November 15	November 16
December 6	December 7
December 20	December 21

Free E-Waste Event

Friday, October 9-

Monday, October 12

Novato Recycling Center

7576 Redwood Blvd.

10:00am-3:00pm

A 4 day free drop-off event for Novato residents to recycle common electronic products will be held at the Novato Recycling Center. All types of household electronics will be accepted, such as:

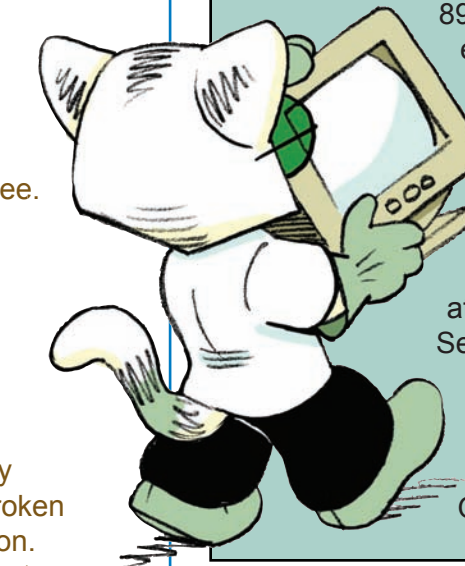
- TV's
- Fax Machines
- Phones
- VCR's & DVD's
- Toasters
- Vacuums
- other small household electronics
- Computers
- Radios
- Stereos
- Blenders
- Hair Dryers
- Coffee Makers

E-Waste is considered hazardous waste and cannot be disposed of in the trash.

Look for an upcoming special mailer or call 892-7344 for more information. This event is for Novato households only. Businesses must call 892-6395 for e-waste disposal information.

Large appliances such as washers, dryers, stoves, refrigerators, water heaters, dishwashers or air conditioners will not be accepted at this event. Contact Novato Disposal Service at 897-4177 for a for-fee pick-up of these items.

Goodwill accepts working and non-working home electronics year round. Goodwill is located at 936 Seventh St.



Did You Know...

- ...California's diversion rate, which is the best in the nation, was 58% in 2007. That's 53.5 million tons of recycling, equivalent to filling more than 100 football fields to the height of the Empire State Building.
- ...The recycling/reuse industry accounts for approximately 85,000 jobs, and contributes an estimated \$4 billion in payroll to the California economy.

source:

<http://www.ciwm.ca.gov/Publications/General/CalRecycle/2009007.pdf>

Novato Recycling & Buyback Center

7576 Redwood Blvd.
(next to Shamrock Materials).
Open Tuesday - Sunday, 10am - 4pm

The Redwood Boulevard Recycling Center pays for California Redemption Value (CRV) containers AND accepts non CRV containers for dropoff.

We also accept non-CRV cans and bottles, newspaper, single layer cardboard (paperboard), mixed household/office paper (colored & white paper), magazines, catalogs, junk mail and cardboard for dropoff.

Novato Recycling Depot

The Square Shopping Center
(Novato Blvd. & Wilson Ave., located behind market in alley)
Open Tuesday - Saturday, 10am to 4pm

The Recycling Depot pays for California Redemption Value (CRV) containers only.

The Recycling Depot buys back CRV plastic, glass bottles, and aluminum and metal cans only. The Recycling Depot accepts non-CRV containers for dropoff only. The Depot does not accept other recyclable materials. Please go to Redwood Recycling Center with non-CRV dropoff recyclables such as cardboard and mixed paper.

Buyback Guidelines

- Material that is contaminated with dirt, moisture or debris may be paid at a discounted rate. The customer may choose to take contaminated material back or accept a reduced payment rate for contaminated material.
- The buyback and recycle depots are for household recycling only. For commercial recycling collection, please call 897-4177.



Novato Disposal, Inc.
PO Box 1916
Santa Rosa, CA 95402

Tel (415) 897-4177
Tel (800) 243-0291
Fax (707) 586-5543

See us on the web at www.unicycler.com

♻️ Printed on 30% Recycled Content Paper with Soy-Based Inks

Attention Apartment Managers!

Because the Recycling News is mailed to customer account billing addresses, most apartment and multifamily complex residents do not receive the Recycling News. Generally only residents that pay directly for garbage service receive our mailings.

If you would like your tenants to receive the biannual Recycling News, please provide an electronic file of the unit addresses and permission from the complex manager or owner. We don't need anyone's name; newsletters will be delivered to the "resident" at each unit. Please call 897-4177 for more information on how to add your units to our mailing list.

Receiving the Recycling News can be a valuable tool for residents. Each issue includes a comprehensive recycling guide as well as information on household toxics disposal options and waste reduction techniques. The News can help direct your tenants to reuse opportunities such as thrift stores or material exchange programs.

By educating tenants to recycle and otherwise reduce waste, you may find some cost savings on your collection bill!



Cooking Oil Recycling

Cooking oil (and other liquids) don't belong in garbage, recycling or yard waste carts, you can't pour it down the drain, and it's not hazardous waste, so what's a chef to do?

When cooking oil or other liquid waste is placed in carts, it can squish out of collection vehicles and cause slick and icky messes on the roadways and jeopardizing stormwater drains and Marin County creeks.

There is a solution. Restaurants often accept clean, liquid vegetable oil that is mostly free of any solids, meat scraps or water. So when you are done cooking that turkey, making french fries or other oil intensive foods, run the liquid through a

Know of a Novato Restaurant that accepts used oil?
Let us know at greenteam@unicycler.com.

Petaluma:

Willowbrook Ale House
3600 Petaluma Blvd N.
(707) 775-4232

Will accept up to 10 gallons of clean oil that is free of solids or water. Call first for instructions.

strainer or cheese cloth, bottle it up and deliver it to the location listed.

Can't make it to this location?

Saturate kitty litter or some other absorbent with the oil and bag securely in plastic before disposing in trash.



Yard Waste Guidelines

- Place all grass cuttings, leaves & weeds, tree & shrubbery trimmings, berry bushes and other yard & garden waste inside your green rolling cart. Branches under 3" in diameter and less than 4 feet long are accepted.
- Place your yard waste cart at the curb allowing at least three feet of space between containers.
- All greenwaste must be in the container. Loose material will not be collected.
- Do not put yard waste in plastic bags.



Keep your Green Clean!

The Following Materials are Banned from your Yard Waste Cart.

- garbage
- rock
- lumber
- plastic bags
- pet waste
- bamboo
- processed or treated wood products
- sod or dirt
- gravel or concrete
- playground bark
- nursery pots or plastic
- food waste
- palm fronds

You may be charged for contaminated yard waste carts!

BioStack Backyard Composters

Looking for a convenient way to contain your home compost pile? This stackable compost bin is durable, easy to use, and will break down your yard and food waste into a fine soil amendment to use for all types of gardening.

Call our office for details or visit our website at www.unicycler.com for more information.

SINGLE-STREAM RECYCLING GUIDE

Place all Recycling Together inside the Blue Cart

MIXED PAPER AND CARDBOARD

Flatten or cut boxes to fit loosely inside cart
Place shredded paper in clear or paper bag

- | | |
|----------------------------|----------------------------------|
| YES | NO |
| ✓ White & Colored Paper | ✗ Napkins, Towels, Tissues |
| ✓ Office Paper & Junk Mail | ✗ Food-Contaminated Paper |
| ✓ Newspaper | ✗ Pizza Boxes |
| ✓ Magazines & Catalogs | ✗ Photographs or Blueprint Paper |
| ✓ Cereal & Shoe Boxes | ✗ Waxed Cardboard or Paper |
| ✓ Corrugated Cardboard | |



MILK CARTONS AND JUICE/RICE/SOY BOXES

Remove straws & tops
Empty before recycling

- | | |
|----------------|-------------------------|
| YES | NO |
| ✓ Milk Cartons | ✗ Plastic-Lined Cartons |
| ✓ Drink Boxes | ✗ Straws or Pop Tops |



GLASS BOTTLES & JARS

Remove caps & tops
Empty before recycling

- | | |
|-------------------------|-------------------------------|
| YES | NO |
| ✓ Clear & Colored Glass | ✗ Window or Mirror Glass |
| ✓ Food & Beverage Jars | ✗ Ceramic, Dishes or Stemware |



PLASTIC CONTAINERS

Wash & squash, remove caps
Empty before recycling

- | | |
|------------------------|----------------|
| YES | NO |
| ✓ Plastic Containers | ✗ Plastic Caps |
| ✓ Milk & Water Jugs | ✗ Styrofoam |
| ✓ Soda & Juice Bottles | ✗ Plastic Bags |
| ✓ Yogurt & Deli Tubs | |



METAL CANS

Wash & squash, leave labels on
Empty before recycling

- | | |
|-----------------------------|----------------|
| YES | NO |
| ✓ Aluminum Cans | ✗ Plastic Caps |
| ✓ Steel & Tin Cans | ✗ Styrofoam |
| ✓ Bimetal Cans | |
| ✓ Empty Paint/ Aerosol Cans | |

