



Redwood Empire Disposal
 PO Box 14609
 Santa Rosa, CA 95402-14609
 (800) 243-0291
 (707) 585-0291

Check out the Go Green Pledge and the new Online Bill Pay at www.unicycler.com

Printed on 30% recycled paper with vegetable-based inks on FSC certified paper.



West Marin Recycling News

Spring 2008

Go Green With Redwood Empire Disposal

Redwood Empire Disposal encourages residents and businesses to “go green” by reducing the amount of garbage they create and by enhancing recycling and waste reduction programs. Redwood Empire Disposal takes great pride in practicing environmental stewardship in our own day-to-day operations. The following are just a few of our latest “Green” operational practices:

Split-bodied Collection Vehicles

You may see new split-body collection vehicles in some communities. These trucks have a split compartment so drivers can pick up both trash and recycling in one stop. These new eco-friendly vehicles decrease the number of trips through neighborhoods by one-third, while the two-compartment trucks keep trash and recycling materials separated.



The amount of fuel and energy saved, not to mention reduced traffic on highways and neighborhood streets, is an important step for the environment.

Alternative Fuels

Our entire fleet of collection vehicles run on Ultra-Low Sulfur Diesel fuel. ULSD fuel is a specially refined diesel fuel that has a dramatically lower sulfur content than the previous standard for on-highway diesel. The sulfur content of ULSD is approximately 15 parts per million (ppm). Compare that to 500 ppm for low sulfur fuel and 3,400 ppm for off road diesel.

Retread Tires

Here at Redwood Empire Disposal, we take the five R's-Reduce, Reuse, Recycle, Rot, and Rethink very

seriously. For example, instead of purchasing new tires, many of our old tires are sent for retreading to Tire Distribution Systems. The practice of retreading tires saves precious fossil fuels. TDS Manager Randy Sandretto explains, “it takes 22 gallons of oil to manufacture a brand new tire and only 7 gallons to retread an old one, saving 15 gallons of oil for every tire that is retread”. During 2007, Redwood Empire Disposal and affiliated companies retread 588 tires, saving 8,820 gallons of oil.

Organics Recycling

For residents interested in starting a backyard organics recycling program at home, we are offering the Smith & Hawken BioStack Backyard Composter See page 3 for details. Composting organics helps to cut down on materials that were previously landfilled.



Dedicated Outreach Staff

To emphasize the importance of recycling, Redwood Empire Disposal has a dedicated Recycling Outreach Staff available to our business, school and multifamily customers. Our Recycling Staff conduct site visits, perform waste assessments, deliver recycling presentations and staff trainings, develop educational literature, and increase the signage on recycling and garbage containers; all in a days work.

Greenhouse Gas Inventory

Redwood Empire Disposal recently signed up with the California Climate Action Registry. and is in the process of conducting a greenhouse gas inventory. An inventory is necessary to assess what our current emissions are so steps can be taken to identify potential reductions and develop an action plan to have a lighter step on the earth.

Planning for the Future

Redwood Empire Disposal is in the design phase for a new facility that promises to significantly reduce the solid waste that must be landfilled. Because landfill space is a limited resource, it is more important than ever that we all become active participants in generating less trash. By removing resources from the waste stream and directing them to reprocessing and manufacturing facilities, valuable resources are reclaimed and put back into the market place rather than being buried forever. Stay tuned for exciting developments as these plans unfold!

Recycling programs are dependent on good markets for post-consumer materials. Consumers help to keep markets strong buy purchasing products made from recycled materials.

Informative Newsletters

Watch for the Redwood Empire Recycling News. The newsletter contains valuable information and resources as well as outlines the great services available to you from Redwood Empire Disposal.

See Go Green on page 2

Community Resources

Trash to Treasure

Tune in to Community Radio KWMR 90.5 FM Point Reyes Station and 89.7 FM in Bolinas on Monday's from 5-5:30 for a free on-air materials exchange. Let us know your available or wanted materials and we will announce them over the radio to help redistribute materials to the West Marin community. This is also the place to learn about recycling programs and resources such as the Marin County Recycling Guide in the AT&T Yellow Pages, computer and electronics recycling options, household battery dropoff locations and information about Toxic Away Days and Bulky Waste pickup days.



West Marin Lending Library

This new Lending Library provides the community with an alternative to single use products commonly used at community events. Instead of using disposables, residents may “borrow” up to 300 plates, mugs, bowls, and utensils. The Library also has other items such as coffee urns and serving platters. The Library is growing and the use is steady and constant. For more information, contact Point Reyes Nation at events@pointreyesnation.com or Madeline Hope at mnietohope@gmail.com or 415-446-8587.



West Marin Recycling News

From Customer Service



Guidelines and Reminders

Due to the high volume of traffic and vehicles in some neighborhoods and for everyone's safety and convenience, we request that you pay special attention to the following:

- Please leave three feet between garbage, recycling and yard waste carts. Do not place carts within three feet of vehicles, mailboxes, other obstacles or personal property.
- Place carts at the road edge the night prior to your service day.

To help us provide the best service to you, please observe the following:

- Please park your car in your driveway the night before your collection day wherever possible. There may be a delay in collection of blocked carts.
- Place garbage loosely in your cart. Carts that are overstuffed or have material jammed into them may not empty completely.
- You may opt to set out recycle and yardwaste carts only when full if you choose.
- Please remove your containers from the road edge as soon after they have been serviced as is practical.

Extra Charge for Extra Trash

If you have an overloaded garbage cart or extra bags of garbage piled on top of, or alongside your cart, you will receive an automatic charge for each extra bag or box of garbage. Carts are considered overloaded if the lid will not close.

If you have extra garbage, call our office at 800 243-0291 by 3 pm the day preceding your regular collection day to order extra service and avoid confusion when you receive your bill. Do not overstuff your carts as they may not empty completely.

2008 Holiday Schedule

With the exception of the Christmas and New Years Days, Redwood Empire Disposal collects solid waste, recycling each week in West Marin. During these holiday weeks, service will be delayed by one day for customers whose collection day falls on or after the holiday. Regular service resumes the week following the holidays.

Redwood Empire Staff Available to Green Your Business

Are you a commercial customer looking for ways to increase recycling and reduce waste at your business? Look no further, Redwood Empire Disposal is here to work with you to meet your waste reduction goals. Redwood Empire Disposal wants to remind businesses of several services we provide designed to support your recycling efforts at no additional cost.

- Redwood Empire Disposal has a strong recycling outreach team in place to meet your needs. Whether it is questions that need answering, site assessments or recycling presentations, our outreach team is available to work with you to improve your business-recycling program. We have created a useful resource packet with information and resources designed to encourage your recycling efforts. Our team can be reached by calling customer service at 800-243-0291 and asking for a Redwood Empire Disposal recycling coordinator.



resources designed to encourage your recycling efforts. Our team can be reached by calling customer service at 800-243-0291 and asking for a Redwood Empire Disposal recycling coordinator.

- Did you know that there is no additional cost for a recycling container? Believe

it. Not only is there no additional cost to you, it is easier than ever with our single stream system. If you are not yet recycling at your business and would like to, get in touch with a recycling coordinator for a site assessment; they will provide you with the necessary information to jump-start your recycling program.

- A great way to learn more about recycling is to visit our website at www.unicycler.com. There you will find a wealth of information including different service levels options and rates, hazardous waste disposal options and other useful recycling resources. You will also find helpful links to recycling sites including the Marin County Recycling Guide located in the AT&T Yellow Pages.
- Newsletters, like the one you are reading, are another great resource available to you. If you are a property manager and are responsible for paying the garbage bill for commercial tenants, your tenants may not be receiving these newsletters directly. Contact our offices to add your tenant unit addresses to the mailing list so they can learn more about how they can reduce waste and increase recycling.

Contact us at 800-243-0291 or visit us online at www.unicycler.com to learn more about services available to you at no extra cost. Redwood Empire Disposal is committed to encouraging waste reduction in the business place, we are here to help.

West Marin Green Team Project

West Marin Youth Green Team

Meetings at West Marin School on all minimum days in the 2007/2008 school year. This is a service learning opportunity where young people, K-12 are invited to participate in learning opportunities that support eco-literacy. We have partnered with local action groups and local businesses to participate in clean up events, plant trees for restoration projects and make signs for our school garden. Contact Madeline Hope at mnietohope@gmail.com about upcoming Green Team meetings.

West Marin Adult Green Team

The first West Marin Adult Green Team Training was just completed with six participants. Join a local Green Team in West Marin and learn more about reducing your ecological footprint. Contact the Environmental Action Committee of Marin at (415) 663-9312 or eac@svn.org or Madeline Hope at mnietohope@gmail.com or 415-446-8587.

Go Green.... continued from page 1

The Go Green Pledge

Redwood Empire Disposal is always looking for new ways to "Go Green" and we encourage our customers to do the same. We encourage everyone to go beyond recycling bottles and cans and to try out new behaviors to boost recycling and waste reduction practices. For more information on our "Go Green" pledge, visit our website at www.unicycler.com. Take the Pledge and we'll send you a free gift!



Website Resources

Visit our website at www.unicycler.com for information on all of the great programs listed above. Find great waste reduction and recycling resources including downloadable posters and recycle guides to help you jump start your program. Check out links to local and state recycling resources, hazardous waste disposal options, locate used motor oil and household battery dropoff locations and information on how to start a compost program at home or school. Check back periodically for updates as we continue to expand on the great recycling and waste reduction programs we offer.



Home Composting: Reduce Waste and Enrich Soils

Do you want to learn more about reducing discards from your home that are landfill bound? Take a look at what is left in your trash and you will likely find a lot of food waste that could be composted. To cut back on sending these resources to the landfill, consider setting up a compost routine at home. It's easy and will work for all types of households—whether you have a yard or not.

State waste characterization statistics indicate that nearly 30% of the residential waste stream is food scraps. When put into landfills, this material creates methane, a greenhouse gas 21 times stronger than carbon dioxide. By setting up a compost pile, you can keep these materials from going to the landfill and create a nutritious compost to enrich your garden.

Here's how:

- o **Backyard composting:** Redwood Empire Disposal made a special purchase of the Smith & Hawken BioStack home compost bin and is making them available to customers at a reduced rate of \$69. It comes with a booklet that

describes the ABC's of composting. There are also many other backyard composters available on the market, or you can build your own. Contact Redwood Empire Disposal customer service at 800 243-0291 to order. See box below for more details.

- o **Apartment Composting:** Check out the Happy Farmer Kitchen Composter at www.scdworld.com or build your own worm bin out of Tupperware. See www.nycocompost.org to learn how.

- o **Other Resources:**

- Marin County Master Gardeners: Find them at http://cemarin.ucdavis.edu/Master_Gardener/ or (415) 499-4204. Master Gardeners are a great resource for all your gardening and composting questions. Check out their classes and workshops. Master Gardeners are available by phone to answer your gardening and compost questions.
- California Integrated Waste Management Board: www.ciwmb.ca.gov/FoodWaste. This site has lots of good information about the volume of food being disposed, a hierarchy for addressing food scrap management and practical help for setting up compost programs.
- Redwood Empire Disposal website: www.unicycler.com. Check out our site to learn more about what you can do to Go Green.



BioStack Composter On Sale Now

Got yard cuttings to dispose? Food waste from your kitchen? Instead of sending these organic materials to the landfill, choose to compost in your own backyard with the Smith & Hawken BioStack Composter. This stackable compost bin is durable and easy to use, and will breakdown your yard and food waste materials into a fine soil amendment to use for all types of gardening.

Get familiar with the fourth R: reduce, reuse and recycle and ROT. Compost is nature's way of recycling. Santa Rosa Recycling & Collection is pleased to offer this sturdy composter to customers at our cost of \$69. This is a significant savings over retail prices. Give our office a call at 586-1478 to arrange to pick up your composter today!

Got Toxics?

Hazardous Waste Options

1. Marin Household Hazardous Waste Facility

565 Jacoby Street, San Rafael (415) 485-6806
www.marinsanitary.com/hazardous.html

Operating Hours:

Residential Customers	Mon -Sat 8am - 4pm	(415) 485-6806
Business Customers	Mon & Tues by appt.	(415) 485-5648

Residents of West Marin may bring materials to the Household Hazardous Waste Facility in San Rafael at no cost. Residents do not need an appointment to drop-off the following toxics at the hazardous waste collection facility.

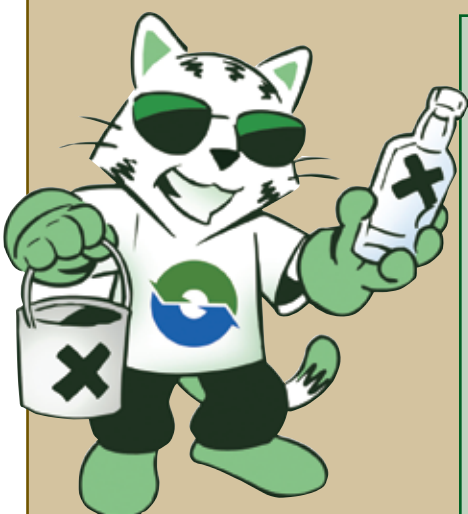
Businesses may dispose of small quantities of hazardous waste by appointment and for a fee. Please call for information and to make an appointment.

The following and other types of HHW are accepted:

- oil based paints, stains & thinners
- household batteries
- fluorescent bulbs and tubes
- pesticides, insecticides & pool chemicals
- mercury thermometers & switches
- sharps & lancets (in approved containers)
- asbestos with special handling. Call for instructions.
- motor oil & filters
- engine cleaners & brake fluid
- computer monitors/televisions
- poisons, baits & sprays
- propane tanks
- computer monitors & televisions

2. Toxics Away Days

One day drop off events are scheduled periodically in West Marin. Sponsored by the Marin JPA, Marin & San Rafael Fire Departments and Phillips Services. Call (415) 485-5648 for information.



Transporting Hazardous Waste

Materials must be packaged in sturdy, non-leaking containers no larger than 5 gallons or 50 pounds in size. Do not mix different wastes together.

State law limits the total amount transported at one time to 15 gallons or 125 pounds. The exception is latex paint and motor oil, which can be a total of 20 gallons combined.

A resident of the household that generated the waste must accompany the waste material that is dropped off. Proof of the residency is required in the form of a drivers' license, tax bill, or utility bill that shows the street address.

Motor Oil & Filter Recycling



Used motor oil must be disposed of properly. The following locations accept motor oil and filters.

Drop off oil during business hours only.

Drake Highway Garage

12786 Sir Francis Drake Blvd.,
 Inverness (415) 669-1017
 Mon-Fri 8am to 5pm

Jiffy Lube in San Rafael

9000 Northgate Mall (415) 491-1417
 Mon-Fri 8am to 5pm

Kragen Auto Parts in San Rafael

2313 Second Street (415) 454-2963
 Mon-Sat 8am to 8pm

Marin Household Hazardous Waste Facility

565 Jacoby St., San Rafael
 Residential (415) 485-6806 Business (415) 485-5648
 Mon-Sat 8am to 4pm.

Pennzoil 10-Minute Oil Change in San Rafael

1524 Second Street (415) 457-5823
 Mon-Sat 8am to 5pm

Household Battery Recycling

Household batteries are considered hazardous waste and must be disposed of properly. The following locations accept household batteries during business hours only:

Building Supply Center

Point Reyes Station

Woodacre Fire Station

33 Castle Rock Road

Point Reyes Fire Station

401 B Street

Tomales Fire Station

599 Dillon Beach Road

Fairfax Town Hall

142 Bolinas Rd.

Nicasio Volunteer Fire Station

On the town square

Single Stream Recycling Guide

No garbage or plastic bags in your recycle containers please!

Your container will not be collected and you may be billed for extra garbage

- Empty & clean containers
- Remove plastic and metal lids
- No plastic bags
- No styrofoam
- No hazardous or liquid wastes

Place all Recycling Together in Blue Cart

Businesses may call Redwood Empire Disposal at 800 243-0291 to set up a free commercial recycling program.

Mixed Paper and Cardboard

Flatten or cut boxes to fit loosely inside cart. Put shredded paper in paper bags inside cart.

YES

- ✓ White & Colored Paper
- ✓ Office Paper & Envelopes
- ✓ Newspaper
- ✓ Junk Mail & Envelopes
- ✓ Magazines & Catalogs
- ✓ Paperback & Phone Books
- ✓ Small Pieces of Cardboard
- ✓ Single Layer Cardboard (cereal, shoe boxes, etc.)
- ✓ Corrugated Cardboard

NO

- ✗ Plastic Bags
- ✗ Food Contaminated Paper
- ✗ Pizza Boxes
- ✗ Waxed Cardboard or Paper
- ✗ Photographs or Blueprint Paper
- ✗ Napkins, Towels, Tissues



Milk Cartons and Juice/Rice/Soy boxes

Empty containers before recycling. Remove lids and straws.

YES

- ✓ Milk Cartons
- ✓ Drink Boxes
- ✓ Juice Concentrate Cartons
- ✓ Frozen Food Packaging

NO

- ✗ Plastic Lined Cartons
- ✗ Straws or Pop Tops
- ✗ Plastic Bags



Glass Bottles & Jars

Empty containers prior to recycling. Remove lids.

YES

- ✓ Clear & Colored Glass
- ✓ Food & Beverage Jars

NO

- ✗ Ceramic, Dishes or Stemware
- ✗ Window or Mirror Glass



Plastic Containers

Empty before recycling. Wash & squash. Remove caps.

YES NO

- ✓ Rigid Plastic Containers
- ✓ Milk & Water Jugs
- ✓ Soda & Juice Bottles
- ✓ Shampoo & Detergent Bottles
- ✓ Yogurt & Deli Tubs
- ✓ Pasta and Deli Trays

- ✗ Plastic Caps
- ✗ Plastic Bags
- ✗ Styrofoam



Metal Cans

Wash & squash, leave labels on. Empty before recycling.

YES

- ✓ Aluminum Cans
- ✓ Steel & Tin Cans
- ✓ Bimetal Cans
- ✓ Empty Paint/ Aerosol Cans

NO

- ✗ Plastic Caps
- ✗ Plastic Bags
- ✗ Styrofoam
- ✗ Scrap Metal



Yard Waste Recycling Guide

Did you know that the contents of your green cart is turned into compost and mulch? It is placed on home gardens and on school grounds, and is used by farmers and landscapers. Please be sure to keep garbage, plastic bags and plant pots, as well as glass and all other debris out of the green cart. It could end up on a garden growing tomorrow's supper!

1) Place only *clean green* in your green cart:

- grass cuttings
- prunings
- leaves
- weeds
- berry vines
- garden waste
- tree trimmings less than 4 inches in diameter

2) These are *not* allowed in your green cart:

- Garbage
- Plant Pots
- Plastic Bags
- Dirt
- Rock
- Sod
- Glass
- Metal
- Pet Waste
- Bamboo
- Poison Oak
- Palm Fronds
- Dimensional Lumber
- Wood Items
- Cooking Oil or Fat
- Meat

3) Green carts are collected alternate weeks:

- Set container at road edge the night before your regular collection day.
- Leave three feet of space between containers.

- All yard waste must be inside container. Loose material will not be collected.

- Do not put yard waste in plastic bags.

- **Contaminated yard waste won't be collected.**



It's good to recycle your junk mail.
It's even better to stop getting it.

Reducing junk mail gets clutter out of your mailbox, frees up your time, and helps protect the environment. It takes 17 trees to make a ton of paper. That means nearly 100 million trees get used for junk mail every year in the U.S. Let's keep the trees in the forest, and get the junk mail out of your life.

For your free Junk Mail kit, visit www.stopwaste.org

Green Resource Guide

• Visit our website at www.unicycler.com for recycling and toxics disposal information including downloadable posters, resources for businesses and schools and much more.

• Search the Marin Hazardous & Solid Waste database to answer your recycling and toxics disposal questions and to learn more about local waste reduction and recycling options. Visit www.marinrecycles.org.

• **Marin County Recycle Guide** in the AT&T Yellow Pages behind the tab under Recycling. An A-Z listing for directing materials away from the landfill. Contains complete information for proper toxics disposal. Also available online at www.marinrecycles.org.

• **MarinMax** This free online exchange helps connect people with stuff. List items you have available or search for items you want on Marin County's Material Exchange website. Visit www.marinmax.org.

• **Marin County Builders Guide** This guide includes a list of Bay Area businesses that accept Construction and Demolition materials for reuse. Also is information on hazardous material recycling, deconstruction, the green business program and green building. Available online at www.marinrecycles.org.

• Ever ask a beverage container why you should recycle? This would be the site to visit. Ask around and you're not likely to find a single bottle or can that doesn't believe in recycling. Visit www.bottlesandcans.com to find out more.

• **Green Building** is a whole systems approach to the design, construction and operation of buildings. The Community Development Agency has established green building and energy efficiency standards and provides incentives including rebates, permit expediting and free technical assistance to incorporate green building into construction projects. Contact the Green Building Coordinator for more information www.maringreenbuilding.org.

• **The Green Business Program** is a voluntary partnership among business leaders, government agencies and nonprofit organizations. We recognize and promote businesses that:

- Demonstrate compliance with applicable environmental regulations.
- Conserve energy, water, and other materials.
- Implement sound environmental practices that reduce wastes and prevent pollution.

Visit www.maringreenbusiness.org to learn more.