



Windsor Refuse and Recycling

PO Box 3909
Santa Rosa CA 95402-3909
(707) 586-5545

Printed on 30% recycled paper with soy-based inks

Trim Your Waste.



Windsor Recycles.

The Windsor Waste Watcher

A Community Service Publication of Windsor Refuse and Recycling

Summer 2004



Keep your green clean!

Don't place plastic bags and other contaminants in your curbside yard debris container. Yard debris only.

Is Your Green Clean?

Windsor Refuse & Recycling has been working with the County of Sonoma and Sonoma Compost to help Sonoma County residents learn about the importance of keeping our "green clean."

Yard waste collected in Sonoma County curbside programs is taken to the Sonoma County Central Landfill where it is processed into organic

compost and mulches. Compostable material must be free of all wood scraps, plastic bags, plant pots,

trays, hoses and other debris. Workers sort through the collected yardwaste by hand to remove prohibited materials. The 18 acre compost facility currently receives about 200 tons of yardwaste per day.

The material processed at the compost facility used to go into the landfill. By recycling our yardwaste, we are helping Sonoma County meet state mandates to increase recycling. Please do your part by keeping your "green clean".

Contaminated yardwaste will not be collected. You may be subject to additional fees if plastic bags, wood waste or garbage are found in your carts as contaminated loads must be disposed of as trash.

For more information, contact Sonoma Compost at 664-9113.

Town of Windsor Community Cleanup

August 13, 14, 15 & 20, 21, 22

New Time & Location! 7 am to 3:30 pm

Now Located at the Windsor Corporation Yard

8400 Windsor Road, across from Windsor High School

Clean out the garage, closet and yard.

Boxes will be provided for:

- garbage
- recycling
- wood
- yard debris
- scrap metal

The Salvation Army will be on hand to accept your reusable items.

Please! No hazardous or banned materials, including computer monitors, televisions, freon appliances, motor oil, household or automotive batteries, paint, fluorescent bulbs or propane tanks.

See box to right for hazardous waste disposal information.

Proof of Windsor residency will be required.

August Toxic Roundup



August 14 & 15
SANTA ROSA
County Civic Center
Administration Dr.
9 a.m. - 3 p.m.

Business Hazardous Waste Collection
Appointment required. Call 877-747-1870.

Hazardous Waste Disposal Information:

- See the Recycle Guide in the Yellow Pages under Recycling
- Call the Eco-Desk at 565-DESK (3375)
- Visit www.recyclenow.org

New Rates Effective July 1, 2004

These new rates, approved by the Windsor Town Council and adjusted in accordance with our contract with the Town of Windsor, reflect increased disposal fees at Sonoma County Disposal sites and the use of biodiesel in collection vehicles.

Residential Cart Service	
Service Description	Service Rate
20 gallon refuse container	\$ 9.52
32 gallon refuse container	\$ 10.08
68 gallon refuse container	\$12.64
95 gallon refuse container	\$16.25
Additional 32 gallon refuse container	\$ 10.08
Additional 68 gallon refuse container	\$12.64
Additional 95 gallon refuse container	\$16.25
Additional 68 or 95 gallon greenwaste	\$ 5.70

Commercial Solid Waste Debris Box Service	
Debris Box	Service Rate
15 CYD	\$191.84*
20 CYD	\$191.84*
30 CYD	\$222.25*
40 CYD	\$243.42*
Extra per day	\$18.52

* Customers will be billed the actual cost of disposal in addition to service rate.

Special Charges	
Extra Pickup Service	Rate
20 Gallon Cart	\$5.23
32 Gallon Cart	\$5.28
68 Gallon Cart	\$10.11
95 Gallon Cart	\$14.90
1 CYD	\$32.51
1.5 CYD	\$35.33
2 CYD	\$40.49
3 CYD	\$49.94
4 CYD	\$62.97
6 CYD	\$75.32
Backyard Service	\$27.72

Commercial Roll-Off Compactor Service	
Per CYD	\$257.18*
* Customers will be billed the actual cost of disposal in addition to service rate.	
Front-Loader Compactor Service	
Per CYD	\$28.03

Commercial Refuse Cart & Bin Service						
Container Size	1 pickup per week	2 pickups per week	3 pickups per week	4 pickups per week	5 pickups per week	6 pickups per week
20 Gallon Cart	\$12.17	\$24.26	NA	NA	NA	NA
32 Gallon Cart	\$14.25	\$29.55	\$44.31	NA	NA	NA
68 Gallon Cart	\$18.58	\$36.95	\$55.95	\$76.83	\$99.01	NA
95 Gallon Cart	\$22.85	\$45.97	\$68.94	\$91.95	\$121.51	NA
1 CYD	\$95.03	\$163.75	\$245.58	\$327.45	\$409.35	\$491.20
1.5 CYD	\$98.87	\$171.15	\$256.68	\$355.46	\$441.01	\$526.58
2 CYD	\$117.00	\$202.33	\$314.01	\$419.86	\$519.04	\$609.64
3 CYD	\$162.33	\$281.67	\$400.74	\$519.81	\$638.88	\$757.96
4 CYD	\$198.90	\$346.85	\$494.59	\$642.31	\$790.04	\$937.73
6 CYD	\$228.16	\$423.81	\$619.26	\$814.70	\$1010.10	\$1205.54

From Customer Service

Call Windsor Refuse & Recycling (707) 586-5545

- billing questions • changes or additions to service
- missed or extra pickup
- compliments and complaints

Cart Placement

- Place carts at the road edge the night before your regular service day. Service starts at 6 a.m.



- Space carts three feet apart.
- Keep carts away from carports, overhangs and other obstacles.
- Set carts at the curb with the arrows on the lid pointing toward the street.

- Material jammed into carts may not empty completely. If we are called back to empty a cart that has material jammed in it, you may receive a “call back” charge.

Extra Trash/Contamination

- There is a \$5.00 charge for an extra bag of garbage. You will be billed for extra bags of garbage or if your cart lid will not close completely. Call in advance to let us know you will have extra trash.
- Your recycling and yardwaste will not be collected or you may be charged additional fees if contamination is found in your yard waste or recycle carts. Contaminated carts must be disposed of as trash. Keep all trash and plastic bags out of the green and blue carts. Styrofoam, plastic bags, non-container plastics such as toys, baby bathtubs and nursery pots, carpeting and clothing do not belong in the recycle or yard waste carts. See Recycle Guide on back page or call 586-5545.
- Reusable items should be taken to thrift or second hand stores. They do not belong in recycle carts and will be disposed of as garbage.

Biodiesel

The New Fuel In Town

Beginning this fall, WSCD refuse and recycling trucks operating in Windsor will be powered with biodiesel.

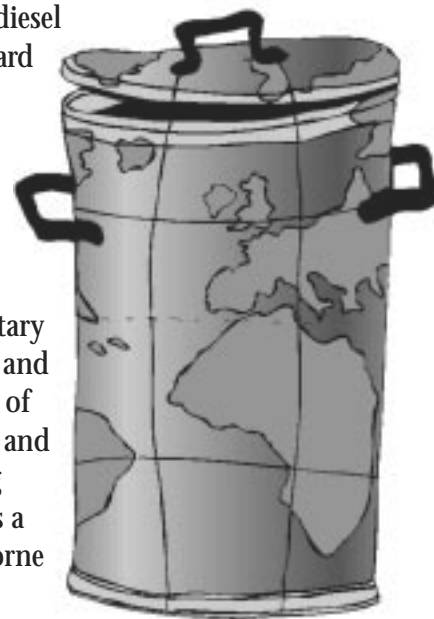
Biodiesel is an alternative fuel made from vegetable oil. It is non-toxic, non-hazardous, biodegradable, and can be produced from recycled and organic ingredients. It is safer to transport and store than conventional diesel and can help reduce dependence on fossil fuels.

Most importantly, biodiesel burns cleaner than standard diesel fuel and reduces emissions of greenhouse gases, particulates, organic compounds and carbon monoxide.

Biodiesel has been successfully used in military and utility fleets, school and city buses in many parts of the country. Solid waste and recycling fleets are being converted to biodiesel as a way to help reduce airborne emissions.

Biodiesel is more expensive than standard diesel. However, the community benefits of biodiesel are significant and WSCD is pleased to announce the initiation of this new fuel source.

The Town of Windsor is the first city in Sonoma County to utilize biodiesel in solid waste and recycling vehicles.



Residential Bin Service

Bin Size	1 pickup per week	2 pickups per week	3 pickups per week	4 pickups per week	5 pickups per week	6 pickups per week
1 CYD	\$95.03	\$163.75	\$245.58	\$327.45	\$409.35	\$491.20
1.5 CYD	\$98.87	\$171.15	\$256.68	\$355.46	\$441.01	\$526.58
2 CYD	\$117.00	\$202.33	\$314.01	\$417.86	\$519.04	\$609.64
3 CYD	\$162.33	\$281.67	\$400.74	\$519.81	\$638.88	\$757.96
4 CYD	\$198.90	\$346.85	\$494.59	\$642.31	\$790.04	\$937.73
6 CYD	\$228.16	\$423.81	\$619.26	\$814.70	\$1010.10	\$1205.54

"Single Stream" Recycling Guide

**Place all recyclables together in the Blue Cart.
No plastic bags, styrofoam or garbage please!**

- Empty & rinse containers before recycling •

Mixed Paper and Cardboard

*Flatten boxes to fit loosely in cart.
Bag shredded paper in paper bags.*

YES

- ✓ White & Colored Paper
- ✓ Office Paper & Envelopes
- ✓ Newspaper
- ✓ Junk Mail & Envelopes
- ✓ Magazines & Catalogs
- ✓ Paperback & Phone Books
- ✓ Small Pieces of Cardboard
- ✓ Single Layer Cardboard (cereal, shoe boxes, etc.)
- ✓ Corrugated Cardboard

NO

- ✗ Plastic Bags
- ✗ Pizza Boxes
- ✗ Napkins, Towels, Tissues
- ✗ Food Contaminated Paper
- ✗ Waxed Cardboard or Paper
- ✗ Photographs or Blueprints



Milk Cartons and Juice/Rice/Soy boxes

Empty & rinse.

YES

- ✓ Milk Cartons
- ✓ Drink Boxes
- ✓ Juice Concentrate Cartons
- ✓ Frozen Food Packaging

NO

- ✗ Plastic Lined Cartons
- ✗ Straws or Pop Tops
- ✗ Plastic Bags



Glass Bottles & Jars

Empty & rinse.

YES

- ✓ Clear & Colored Glass
- ✓ Food & Beverage Jars
- ✓ Leave Labels On

NO

- ✗ Jar Lids or Caps
- ✗ Window or Mirror Glass
- ✗ Ceramic, Dishes or Mugs



Plastic Containers

Empty & rinse.

YES

- ✓ All Plastic Containers #1-#7
- ✓ Milk & Water Jugs
- ✓ Soda & Juice Bottles
- ✓ Shampoo & Detergent
- ✓ Yogurt & Deli Tubs
- ✓ Pasta and Deli Trays

NO

- ✗ Plastic Caps
- ✗ Plastic Bags
- ✗ Styrofoam



Metal Cans

*Empty & rinse.
Leave labels on.*

YES

- ✓ Aluminum Cans & Foil
- ✓ Steel & Tin Cans
- ✓ Bi Metal Cans

NO

- ✗ Plastic Caps
- ✗ Plastic Bags
- ✗ Styrofoam



Yard Waste Guide

- 1) Place only *clean green* in green cart:
 - tree trimmings less than 4 inches in diameter
 - grass cuttings
 - garden waste
 - berry vines
 - prunings
 - weeds
 - leaves
- 2) These are *not* allowed in green cart:
 - Garbage
 - Plastic
 - Plant Pots
 - Plastic Bags
 - Rock
 - Concrete
 - Metal
 - Glass
 - Pet Waste
 - Wood Products
 - Bamboo
 - Palm Fronds
 - Poison Oak
- 3) Place green cart at curb every week:
 - Set container at curb the night before your regular collection day.
 - Leave three (3) feet of space between containers.
 - All yard waste must be inside container. Loose material will not be collected.
 - Do not put yard waste in plastic bags.
 - Contaminated yard waste may not be collected.

What Happens to my Yard Waste?

Yard waste collected from Sonoma County curbside programs is taken to the Sonoma County Central Landfill where it is processed into compost and mulches.

The 18 acre compost facility receives 200 tons per day of yard waste. This is material which used to go into the landfill.

Compost and mulches are used to rebuild Sonoma County soils. They protect valuable topsoil from erosion due to wind and rain, suppress weeds, add nutrients to the soil, conserve water and attract earthworms.

Call 664-9113 for more information.
Put only "Clean Green" in the cart.

NO PLASTIC BAGS



Plastic bags contaminate yard debris and recycling.

 Recycle your bags at grocery stores.