

Windsor Recycling News

Fall 2009

WRR Wants To Recognize Commercial Recyclers

Do You Want...

- ... some free publicity for your company?
- ...a contribution to a local charity made in your name?
- ...to tell the public about how well your company stewards the environment?

Windsor Refuse and Recycling is wrapping up 2009 by hosting a contest to bring attention to the money savings that can be had from reducing the amount of discards bound for the landfill; and is looking for companies that are doing an outstanding job of recycling already or businesses that

want to do a better job but may need some help launching or improving their program.

We are asking businesses to tell us about their recycling and waste reduction programs, describing both practical and creative solutions for reducing waste in the workplace. We will be recognizing companies that are already doing an outstanding job and want to

tell us about it and also companies that are willing to make a concerted effort to establish or improve their recycling plans. WRR staff is available to work directly with businesses at no cost to establish and meet recycling

and waste reduction goals.

WRR is proud to support the recycling and diversion efforts of the business community and wants to recognize avid recyclers, or those who want to be. We look forward to the opportunity to reward businesses that are joining the community-wide effort to recycling, reuse, and reduce commercial solid waste. Weather or not you choose to participate in the contest, your business may utilize WRR outreach staff to help your company recycle more and to realize a cost savings through a reduction in disposal costs.

Contact Us:

Windsor Refuse & Recycling
PO Box 3909
Santa Rosa CA 95407
(707) 586-5545

Office Hours

Monday - Friday 7am-6pm
Saturday - Sunday 7am-3pm

Office Address

3400 Standish Ave., Santa Rosa

Enter The Contest By...

» Sing Your Own Praises:

Tell us about how your company maximizes diversion. As you begin to craft your response, please be sure to keep the following points in mind:

- What materials are being recycled, reused or reduced?
- What strategies are used for motivating and maintaining employee participation?
- What success or innovations has your business realized?

» Develop A New Program:

Ready to be nominated "Most improved player?" Give our office a call and we will come and do a site visit. We'll assess the status of your current recycling program, or lack thereof, and work with you to develop some effective strategies for increasing diversion and reducing discards. We'll meet with you through the year and together we can assess the program to put you at the top of the recycle game.

» Eye on the Prize:

The lucky winners will receive a \$500 donation made to the Windsor charity of their choice, in addition to enjoying the spotlight of a feature article and photo commending their business in the Spring 2010 Windsor Recycling News.

» Send Your Entry In:

Submit your entry by email to melissa@unicycler.com.

Bulky Item Collection

Do you have an item to dispose of that doesn't belong in the trash or is too large for your trash cart? Have an old dryer, mattress or computer monitor? Windsor Refuse & Recycling is pleased to be able to provide Bulky Item Collection on a "for-fee" basis to Windsor residents and businesses. Call us at 586-5545 for details.

Windsor Senior & MHP Resident Discount

Windsor senior citizens are eligible for a reduced rate for collection services. Come by our office to sign up or pick up an application at the Senior Center or the Town Hall offices which will need to be mailed or delivered to our office in Santa Rosa. We need a copy of a valid photo ID and a completed application. Save 15% or more on collection costs!

Walk-In Service

Seniors or disabled customers who do not live with an able-bodied person may be eligible for free side yard service. This service requires a written request from an MD.



Windsor Fall Community Cleanup

October 1, 2, & 3rd 8am-3pm

Thursday, Friday and Saturday

Windsor Corporation Yard

Single family residential customers will be permitted to dispose of up to 6 total cubic yards consisting of any combination of solid waste, recyclables, clean wood waste, and scrap metal.

Bins will be provided for the following materials:

- household garbage
- recycling
- clean wood waste
- scrap metal
- yard waste
- non-freon appliances

The following materials are prohibited:

- mattresses
- tires
- pressure treated wood
- concrete
- freon appliances
- hazardous waste (paint, oil, solvents, batteries, microwaves, E-waste, etc.)

for household hazardous waste information, visit www.recyclenow.org

Freon appliances (refrigerators, freezers, & air conditioners) or mattresses can be picked up from your residence for a fee by appointment only. Call 586-5545.

Holiday Tree Recycling

Please remove all stands, lights, tinsel & ornaments. Flocked trees will not be collected.

Dropoff Location: Windsor Coporation Yard, 8400 Windsor Rd., Dec. 26-Feb 1

Curbside collection: Between December 29th and January 1st, trees may be placed curbside for collection. Please place your trees out the night before your normally scheduled collection day.

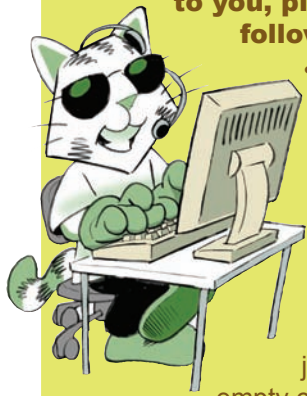
Keep your eye out in your mailbox, local newspaper and on our website for more information.



FROM CUSTOMER SERVICE

GUIDELINES & REMINDERS

To help us provide the best service to you, please observe the following:



- Place carts at the road edge the night prior to your service day
- Leave 3 feet between garbage, recycling & yard waste carts.
- Place garbage loosely in your cart. Carts that are overstuffed or have material jammed into them may not empty completely.

- Please remove your containers from the road edge as soon after they have been serviced as is practical.
- Be sure all items are contained inside your carts. Carts that have items sticking out of them or have material piled on top may not be emptied or may receive additional charges.
- You may opt to set out recycle and yardwaste carts only when full if you choose.
- Never place TV's, computer monitors, syringes, fluorescent bulbs, batteries, oil or paint in the garbage. See the back page for hazardous waste disposal options or visit www.recyclenow.org

For everyone's safety and convenience, we request that you pay special attention to the following:

- Do not place carts within three feet of vehicles, mailboxes, fire hydrants, other obstacles or personal property.
- Collection vehicles need 14' overhead clearance. Carts should not be placed in an area with overhangs, trees or other obstacles.
- Please park your car in your driveway the night before your collection day wherever possible. There may be a delay in collection of blocked carts.

EXTRA TRASH

- If you have an overloaded garbage cart or extra bags of garbage piled on top of, or alongside your cart, you may receive an automatic charge for each extra bag or can of garbage. Carts are considered overloaded if the lid will not close.
- If you have extra garbage, contact our office by 3 pm the day before your regular collection day to order extra service and avoid confusion when you receive your bill. Do not overstuff your carts as they may not empty completely.

HOLIDAY COLLECTION SCHEDULE

- Service is delayed by one day for customers whose service day falls on or after the following holidays when they occur on a weekday:
 - July 4th
 - Labor Day
 - Thanksgiving
 - Christmas
 - New Years Day

DON'T MAKE MUCH TRASH?

Garbage rates are based on the size of your garbage cart. If you are generating less waste, you can reward yourself with a smaller garbage bill by exchanging your current cart for a smaller size. We offer four levels of service. Super recyclers or small families may be able to reduce their waste and subscribe to the 20 gallon service.

If you would like to change your service level, please contact customer service for details and rates.

Meet the Green Team!

We are at your disposal for all your recycling needs!

North Bay Corporation and Redwood Empire Disposal has two new Recycling Outreach and Education Program Coordinators! They are looking forward to continuing the excellent customer service and support that you have come to expect. In fact, you may spot them peeking in your business or multifamily complex garbage and recycling bins while doing recycling assessments. Both are available for all your recycling questions related to your commercial or multifamily recycling service, to establish a new recycling service or for general recycling questions, so feel free to contact the green team at greenteam@unicycler.com, or call 585-0291 and asked to be transferred to a recycling coordinator.

Hailie Barnes, Recycling Outreach Coordinator

Hailie, a Chico State graduate in Environmental Studies, was born and raised in Sebastopol and is excited to return to work in her community. A strong advocate for sustainable communities, she is actively pursuing outreach goals with both commercial and multifamily complex customers as well as providing recycling education to Sonoma County Schools.



Melissa Bushway, Recycling Outreach Coordinator

Born and raised in Santa Cruz, Melissa is excited to have become a part of Sonoma County. A University of California Santa Cruz graduate in Environmental Studies and Earth Sciences, she is most excited to apply her environmental education background to work with local schools and education programs to strengthen their recycling efforts, as well as promote waste reduction and diversion in our communities.



What Would You Like To Read? We want to hear from you!

Is there a recycling topic you would like to know more about? An article you would like to read? Know of a company that has gone green that you would like to recognize? General newsletter suggestions or comments? Send us an email!

greenteam@unicycler.com

Cooking Oil Recycling

Cooking oil (and other liquids) don't belong in garbage, recycling or yard waste carts, you can't pour it down the drain, and it's not hazardous waste, so what's a chef to do?

When cooking oil or other liquid waste is placed in carts, it can squish out of collection vehicles and cause slick and icky messes on the roadways and jeopardizing stormwater drains and Sonoma County creeks.

There is a solution. Several Sonoma County restaurants accept clean, liquid vegetable oil that is mostly free of any solids, meat scraps or water. So when you are done cooking that turkey, making french fries or other oil intensive foods, run the liquid through a strainer or cheese cloth, bottle it up and deliver it one of the locations below. The following locations accept up to 10 gallons of clean vegetable oil that is mostly free of solids or water. No solid material, including meat scraps. No water. Call first for instructions.

Healdsburg

Healdsburg
48 Healdsburg Ave. | (707) 473-9604

Santa Rosa

Betty's English Fish 'n' Chips
4046 Sonoma Hwy | (707) 539-0899
Puerto Vallarta
3333 Cleveland Ave. | (707) 575-4374
Johnny Garlic's
1460 Farmer's Lane . | (707) 571-1800



NEW HOURS

AT REFUSE DISPOSAL SITES

Due to budget cuts, effective July 1, 2009, the County reduced the hours of operation at all Refuse Disposal Sites. Please make a note of the changes.

Annapolis Transfer Station		
33549 Annapolis Rd. CLOSED Sun-Mon-Tues		
Disposal	Wed-Sat 8-4	886-5204
Recycling	Wed-Sat 8-4	886-5204

Central Disposal Site		
500 Mechem Rd., Petaluma CLOSED Sundays		
Disposal	Mon-Sat 7-3	565-7940
Recycling & reuse	Mon-Sat 7-2:30	795-3660
Household Toxics Facility (Building #5)	Thurs-Sat 7:30-2:30	795-2025
Composting	Drop-off Mon-Sat 7-3/ Retail sales Mon-Fri 7-3, Sat 8-3	578-5459

Guerneville Transfer Station		
13450 Pocket Rd./Hwy. 116 CLOSED Sun & Wed		
Disposal	Mon-Tues 8-4, Thurs-Sat 8-4	869-3878
Recycling	Mon-Tues 8-4, Thurs-Sat 8-4	869-3878

Healdsburg Transfer Station		
166 Alexander Valley Rd. CLOSED Sundays		
Disposal	Mon-Sat 8-4	433-5631
Recycling & reuse	Mon-Sat 8-4	433-0321

Sonoma Transfer Station		
4376 Stage Gulch Rd., Sonoma CLOSED Sundays		
Disposal	Mon-Sat 7-3	996-6597
Recycling & reuse	Mon-Sat 7-2:30	996-5423

All Refuse Disposal Sites are closed on Sundays. Thank you for your understanding.

Highlighting a Local Green Business...

Liberty Valley Doors

Redwood Empire Disposal and the Cotati Chamber of Commerce are proud to recognize Liberty Valley Doors for their outstanding commitment to sustainable building, energy, and economic practices. Liberty Valley Doors (LVD), established in 1980, is a custom style and rail door manufacturer specializing in arched and custom designed doors. Liberty Valley Doors received the 2009 Business Environmental Alliance Best Practices Award and the 2008 Business of the Year Award from the Cotati Chamber of Commerce.

A highlight of LVD's accomplishments is that they were able to reduce their garbage from a 15 yard dumpster to a 64 gallon waste cart resulting in over 80% less waste sent to landfill. This significant reduction was achieved by providing all staff, including extended friends and family, with recycling education workshops as well as evaluating all the materials used and switching to recyclable material where possible. LVD took it one step further by starting a program for employees to bring in used computer monitors, batteries, TV's and other electronic waste to be properly recycled and disposed of.

Packaging is often one of the largest waste products that businesses generate from receiving and shipping product. LVD addressed this problem challenging their suppliers to provide packaging that is only made out of recyclable materials. Most of the wood that is used to make their custom doors is either salvaged locally or certified by the Forest Stewards Council. All excess scrap wood is donated to the public and local schools while the sawdust that they produce is donated to local farmers to be used as animal bedding. LVD has taken important steps in reducing the waste that they generate. As if that wasn't enough, they have installed a 117KW Solar Power System which will provide 100% energy offset of their energy usage. They have even purchased a hybrid SUV for their GM who drives more than 120 miles a day. We would like to thank Liberty Valley Door for their amazing achievements in reducing their ecological and carbon footprint in Sonoma County and to encourage other businesses and residents to join them in their efforts towards a more sustainable future.



door at a private residence, created by Liberty Valley Door

Are you a Sonoma County business that wants to be mentioned?

Write us and tell us your story and the steps that you have taken to achieve this success! We want to recognize businesses that make a commitment to reduce waste and choose behaviors that save money and the environment. We have trained and knowledgeable staff who will work with you on developing your recycling program. They are at your disposal for all your recycling needs. For further information please contact Recycling Outreach Staff at greenteam@unicycler.com.

Paying Your Bill Online?

We now offer Automatic Payments as a convenient way for customers to manage their garbage bill! With this service you will not receive a bill in the mail. Your total amount due will be automatically charged to your debit or credit card at the beginning of each billing cycle.

Some customers choose to use a 3rd party such as their personal bank to pay their bills online. This can be a convenient way to pay your bills, but must be managed properly:

- Residential garbage bills are due every three months. Some people have set up their quarterly bill for monthly payment, creating large and unnecessary credits to their account.
- Accuracy is key. Be sure to verify that your account number, including the three letter code, is correct with your online bill-paying service.
- Your account number will change if you move or re-open a closed account. Be sure to update your bill-paying service immediately so your payments are credited properly.

Green Resource Guide

- **Unicycler** Visit our website at www.unicycler.com for recycling and toxics disposal information including downloadable posters, resources for businesses and schools and much more
- **RecycleNow** Search the Sonoma County Waste Management Agency online database or view the Sonoma County Recycling Guide to answer your recycling and toxics disposal questions and to learn more about local waste reduction and recycling options. Visit www.recyclenow.org
- **SonoMax** This online exchange helps connect people with stuff. List items you have available or search for items you want on Sonoma County's Material Exchange website at www.sonomax.org
- **Bottlesandcans.com**. Ever ask a beverage container why you should recycle? This would be the site to visit. Ask around and you're not likely to find a single bottle or can that doesn't believe in recycling. Visit www.bottlesandcans.com to find out more.

Attention Apartment Managers!

Because the Recycling News is mailed to customer account billing addresses, most apartment and multifamily complex residents do not receive the Recycling News. Generally only residents that pay directly for garbage service receive our mailings. If you would like your tenants to receive the biannual Recycling News, please provide permission from the complex manager or owner

and provide us with an electronic file of the unit addresses. We don't need anyone's name; newsletters will be delivered to the "resident" at each unit. Please call (800) 243-0291 for more information on how to add your units to our mailing list. Receiving the Recycling News can be a valuable tool for residents. Each issue includes a comprehensive recycling guide as well as information on household toxics disposal options and waste reduction techniques. The News can help direct your tenants to reuse opportunities such as thrift stores or material exchange programs. By educating tenants to recycle and otherwise reduce waste, you may find some cost savings on your collection bill.



free e-waste recycling events

To make it more convenient for residents and businesses to dispose of their waste properly, the Sonoma County Waste Management Agency is conducting free electronics collection events.



2009-10 e-waste schedule

September 12 & 13, 2009 (Sat. & Sun.) • 8:30-4:30
September City Corporation Yard
(in the parking lot) 714 Johnson St.

October 10 & 11, 2009 (Sat. & Sun.) • 8:30-4:30
Petaluma Sonoma-Marin Fairgrounds
(in the parking lot) 175 Fairgrounds Dr.

November 7 & 8, 2009 (Sat. & Sun.) • 8:30-4:30
Sonoma Friedman's Home Improvement
(in the parking lot) 1360 Broadway Ave.

December 5 & 6, 2009 (Sat. & Sun.) • 8:30-4:30
Windsor North Windsor Park & Ride
Old Redwood Hwy. north of Arata Ln.

January 9 & 10, 2010 (Sat. & Sun.) • 8:30-4:30
Santa Rosa Wells Fargo Center for the Arts
(in the parking lot) 50 Mark West Springs Rd.

February 27 & 28, 2010 (Sat. & Sun.) • 8:30-4:30
Healdsburg Southern Healdsburg Park & Ride
Healdsburg Ave. at Grant Ave. (northeast of Hwy. 101)

March 13 & 14, 2010 (Sat. & Sun.) • 8:30-4:30
Cloverdale Cloverdale Train Depot
501 Asti Rd.

What we accept:

Computer equipment (computers & monitors, laptops, keyboards, printers, mice, hard drives, tape & zip drives etc.)

Consumer electronics (DVD players, VCRs, gaming devices, stereo components, radios, PDAs, cell phones, cables, etc.)

Televisions (CRTs/LCDs)

Office equipment (telephones, fax machines, shredders, etc.)

Kitchen & household appliances (microwaves, stereos, radios, etc.)

Please remove batteries from devices.

We will not accept:

Large appliances (refrigerators, freezers, ovens, stoves, dishwashers, air conditioners, water heaters, etc.)

Business donations in large quantities welcome!

Questions **Sonoma County Eco-Desk 565.3375** www.RecycleNow.org

Sponsors:



A complete list of recycling options for electronic devices can be found in the Sonoma County Recycling Guide printed in the AT&T Yellow Pages phone book under Recycling or visit www.recyclenow.org

YARD WASTE & ORGANICS GUIDE

Did you know that the contents of your green organics cart are turned into compost and mulch? It is placed on home gardens and school grounds, and is used by farmers and landscapers. Be sure to keep garbage, plastic bags and plant pots, as well as glass and other debris out of the green organics cart. It could end up on a garden growing tomorrow's supper!



1) Place only **clean green** in your green cart:

- grass cuttings • prunings • leaves
- weeds • berry vines • garden waste
- vegetative food waste.
- tree trimmings less than 4 inches in diameter

2) These are **not allowed** in your green cart:

- Garbage • Plant Pots • Plastic Bags
- Dirt • Rock • Wood /Plywood
- Glass • Metal • Pet Waste
- Bamboo • Palm Fronds • Poison Oak

3) Green carts are collected every week:

- Set container at curb the night before your regular collection day.
- Leave three feet of space between containers.
- All yard waste must be completely contained.
- Do not put yard waste in plastic bags.
- **Contaminated carts will not be collected.**



North Bay Corporation
Redwood Empire Disposal
PO Box 1916
Santa Rosa, CA 95402

Tel (707) 585-0291
Tel (800) 243-0291
Fax (707) 586-5543

See us on the web at www.unicycler.com

♻️ Printed on 30% Recycled Content Paper with Soy-Based Inks

SINGLE-STREAM RECYCLING GUIDE

Place all Recycling Together inside the Blue Cart

MIXED PAPER AND CARDBOARD

Flatten or cut boxes to fit loosely inside cart
Place shredded paper in clear or paper bag

YES

- White & Colored Paper
- Office Paper & Junk Mail
- Newspaper
- Magazines & Catalogs
- Cereal & Shoe Boxes
- Corrugated Cardboard

NO

- Napkins, Towels, Tissues
- Food-Contaminated Paper
- Pizza Boxes
- Photographs or Blueprint Paper
- Waxed Cardboard or Paper



MILK CARTONS AND JUICE/RICE/SOY BOXES

Remove straws & tops
Empty before recycling

YES

- Milk Cartons
- Drink Boxes

NO

- Plastic-Lined Cartons
- Straws or Pop Tops



GLASS BOTTLES & JARS

Remove caps & tops
Empty before recycling

YES

- Clear & Colored Glass
- Food & Beverage Jars

NO

- Window or Mirror Glass
- Ceramic, Dishes or Stemware



PLASTIC CONTAINERS

Wash & squash, remove caps
Empty before recycling

YES

- Plastic Containers
- Milk & Water Jugs
- Soda & Juice Bottles
- Yogurt & Deli Tubs

NO

- Plastic Caps
- Styrofoam



METAL CANS

Wash & squash, leave labels on
Empty before recycling

YES

- Aluminum Cans
- Steel & Tin Cans
- Bimetal Cans
- Empty Paint/ Aerosol Cans

NO

- Plastic Caps
- Styrofoam



TOXICS DISPOSAL

SERVICE OPTIONS FOR RESIDENTS

1 Household Toxics Facility

Located at the Central Disposal Site, the Household Toxics Facility is open every week for **free drop-off** of toxics from Sonoma County residents. Bring your ID to prove residency.

Appointment: Not required

Hours: **Thursday, Friday & Saturday**
7:30 am-2:30 pm

Location: **Central Disposal Site**
500 Meham Rd., Petaluma



2 Community Toxics Collections By appointment only

Every week there is a toxics collection somewhere in Sonoma County. Bring your ID to prove residency.

Appointment required: Call **795-2025** or toll-free **1-877-747-1870**
Call at least 24 hours prior to the collection event.

Hours: **Tuesdays 4-8 pm**

2009-10 Community Toxics Collections schedule

September 2009

- 1 Sonoma
- 8 Santa Rosa, SE
- 15 Cloverdale
- 22 Oakmont
- 29 Petaluma

December 2009

- 1 Sebastopol
- 8 Cotati
- 15 Oakmont

January 2010

- 5 Petaluma
- 12 Santa Rosa, SE
- 19 Healdsburg
- 26 Santa Rosa, NE

February 2010

- 2 Larkfield
- 9 Rohnert Park
- 16 Santa Rosa, NW
- 23 Monte Rio

November 2009

- 3 Forestville
- 10 Santa Rosa, NW
- 17 Santa Rosa, NE

Locations of Community Toxics Collections will be provided when you schedule your appointment.

March 2010

- 2 Sebastopol
- 9 Cloverdale
- 16 Santa Rosa, NE
- 23 Windsor
- 30 Sonoma

April 2010

- 6 Santa Rosa, SW
- 13 Guerneville
- 20 Boyes Hot Springs

For a complete schedule of events, visit www.recyclenow.org

Transportation & packing: State transportation laws limit each vehicle to a maximum of 15 gallons of liquid (with a maximum of 5 gallons per container) or 125 pounds of solid material • Never mix chemicals • Place in sealed containers in the trunk, packed to prevent spills • Syringes/needles must be in a sealed *FDA-approved* sharps containers.

Not accepted: Explosives or ammunition • Radioactive materials • Electronics • Biological wastes (except syringes) • Controlled substances.



The Household Hazardous Waste program is funded by the Sonoma County Waste Management Agency.

www.recyclenow.org Eco-Desk 565-DESK(3375)

Advertise your discards! www.SonoMax.org



BROWSE

Browse the SonoMax listings. Search the available and wanted listings by category.

POST

Post a new ad—available or wanted. Add to or modify an existing listing.

What is SonoMax? SonoMax, Sonoma County Materials Exchange, is a free online resource where you can find or discard items. It demonstrates the idea that *one person's trash is another's treasure*. Simply log onto the SonoMax web site and create a *wanted* or *available* listing. You can find everything from packaging peanuts to pallets. SonoMax is a program of the Sonoma County Waste Management

Post an ad or browse for materials. Visit us online!

BUSINESS HAZARDOUS WASTE DISPOSAL OPTIONS By appointment only

Household Toxics Facility Located at the Central Disposal Site, the Household Toxics Facility is open for drop-off of hazardous waste from qualified Sonoma County businesses.

Appointment: Call **795-2025** or toll-free **1-877-747-1870**

Forms & fees: Download Business Hazardous Waste Forms from www.recyclenow.org
\$25 processing fee plus disposal fees based on type and quantity of waste.

Hours: **Tuesdays & Wednesdays 7:30 am-3:30 pm**

Location: **Central Disposal Site (Building 5)** at 500 Meham Rd., Petaluma

Community Toxics Collections Every week there is a toxics collection somewhere in Sonoma County.

Appointment: Call **795-2025** or toll-free **1-877-747-1870**

Forms & fees: Download Business Hazardous Waste Forms from www.recyclenow.org
\$25 processing fee plus disposal fees based on type and quantity of waste.

Hours: **Tuesdays 4-8 pm** For the Community Toxics Collections schedule, visit www.recyclenow.org



Using the program:

- Download Business Hazardous Waste Disposal Forms from www.recyclenow.org
- Obtain an EPA Waste ID number (if needed).
- Submit paperwork by fax to receive an appointment to deliver your waste.

The Household Hazardous Waste Program is funded by the Sonoma County Waste Management Agency.